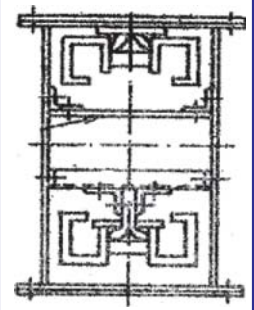




# PREMIUM CHAIN CONVEYOR

(DRAG/REDDLER CONVEYOR)



- Quick and Efficient movement of material
- No DAMAGE of GRAINS/SEEDS
- ENERGY EFFICIENT
- UHMWPE LINER hence no wear & tear
- In-built OVERFLOW DEVICE/ZERO SPEED SWITCH

## CONSTRUCTION AND OPERATION DETAILS :

Premium Chain Conveyor (Drag/Reddler Conveyor) is important conveyor for BULK MATERIAL HANDLING (MECHANICAL).

These Conveyors are ideal for handling variety of Free Flowing materials. These conveyors are meant for QUICK & EFFICIENTLY without DAMAGING (BREAKING). Premium Chain Conveyors carry Grains, Seeds and other FREE FLOWING MATERIALS along entire DEPTH of CONVEYOR on SPECIAL UHMWPE Liners. The material is gently carried out with equal discharge rate and form one more layer. The PLUGGING is return Chain keep the material to a maximum level.

The material is fed past the upper return chain, it then falls in to the through bottom, where the lower chain moves it and forward s the discharge side. When the additional material is introduced, it lays on the top of moving material and is discharge at the same rate as the chain.

## SAFETY FEATURES:

The INBUILT OVERFLOW DEVICE in the event of OVERFLOW of material at discharge end, throws it out. If this is beyond acceptable limit the LIMIT SWITCH provided in the SYSTEM will STOP the motor. for any reason, the speed of the motor varies beyond tolerance limit, the sensor probe at rail end immediately will give the signal to ZERO SPEED SWITCH and this SWITCH will STOP the motor and thus assuring safe operation.

## TECHNICAL SPECIFICATIONS

<b>MODEL</b>	<b>BOX SIZE in mm</b>	<b>CAPACITY (TONS/HR) B.D. 0.7 gm/cc</b>	<b>CHAIN SPEED (MTS/MINUTE)</b>	<b>H.P.</b>
<b>PCC - 150</b>	<b>150 x 200</b>	<b>05</b>	<b>0.45 to 0.6</b>	<b>2</b>
<b>PCC - 200</b>	<b>200 x 250</b>	<b>10</b>	<b>0.45 to 0.6</b>	<b>2</b>
<b>PCC - 250</b>	<b>250 x 300</b>	<b>25</b>	<b>0.45 to 0.6</b>	<b>3</b>
<b>PCC - 350</b>	<b>300 x 350</b>	<b>70</b>	<b>0.45 to 0.6</b>	<b>5</b>

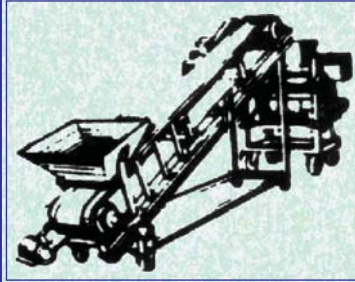
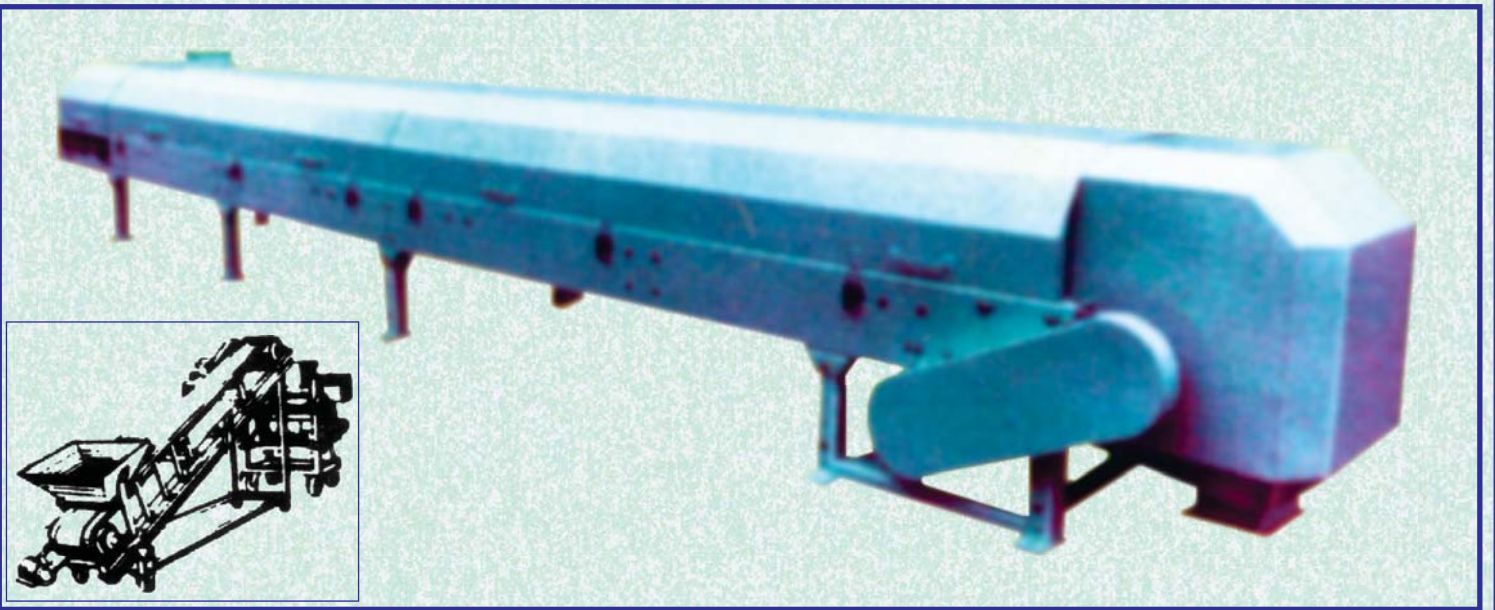
- Chain speed varies between 0.45 to 0.6 M/SEC.
- Capacities are indicative only.
- H.P. Given for 10 Meter Length.

## POPULAR APPLICATIONS:

- GRAINS
- SEEDS
- RICE
- WHEAT
- MAIZE
- MILLETS(Bajra)
- SORGHUM(Juwar)
- COFFEE
- SUGAR
- BEANS
- SOYA
- CORNMEAL
- SUNFLOWER SEEDS and many more.....



# PREMIUM BELT CONVEYOR



PREMIUM PULMAN also designs, develops and installs a large number of Belt Conveyors. We manufacture Through type and Flat Belt Conveyors for various applications as below.

## Utility of Belt Conveyors

Grain Handling  
Lime Handling  
Sand/Cement Handling  
Fertilizer Handling  
Pouch Handling  
Confectionary Handling

Belt Conveyors are used for bags handling, pharmaceutical industry and other industrial applications. Frame of the Belt Conveyor is of pressed steel section. It helps for easy installation and transportation.

Self aligned and HDPF sealed carrying idlers have very free rotational movement, which reduces friction and the power consumption.

## TECHNICAL SPECIFICATIONS

<b>MODEL</b>	<b>CAPACITY M<sup>3</sup>/HR.</b>	<b>TPH for Sorghum B.D. 0.7 gm/cc.</b>
PBC - 400	4 - 40	2 - 28
PBC - 500	42 - 62	29 - 43
PBC - 600	62 - 110	43 - 77
PBC - 800	112 - 200	77 - 140

- Chain speed varies between 0.45 to 0.6 M/SEC.
- Capacities are indicative only.

Manufactured By:

# PRECISION PRODUCTS



Plot No. 2009, Phase-IV, GIDC Industrial Estate, Vatva, AHMEDABAD - 382 445. INDIA  
Phone : (079) 25830836, 25831440 Fax : (079) 25830965  
E-mail : [exports@premiumprocessrquipment.com](mailto:exports@premiumprocessrquipment.com) / [exports@premiumpulverisers.com](mailto:exports@premiumpulverisers.com)  
Visit us : [www.premiumprocessequipment.com](http://www.premiumprocessequipment.com) / [www.premiumpulverisers.com](http://www.premiumpulverisers.com)



ASSOCIATE MEMBER  
**PROFESSIONALS IN PARTICLE TECHNOLOGY**